

RKR & Associates, LLC

Ocala Fl

352.208.8642

OfficestoGo

OfficestoGo.com

Office Furniture

at Exactly the Right Price.



OfficestoGo Work + Task Seating



OTG11685B (page 103) shown in Carrera Zest (CE84) and Superior Laminate Desking shown in Autumn Walnut (AWL) finish.



OTG2913
Luxhide Multi-Function
List Price **\$785**



OTG11710
Multi-Function
List Price **\$700**



OTG3101 - LIMITED QTY AVAILABLE
Mesh Back Synchro-Tilter
List Price **\$700**



OTG3103 - LIMITED QTY AVAILABLE
Mesh Back Multi-Function
List Price **\$737**



Key Features



Back height adjustment via internal ratchet
Available immediately in the following textile:
Luxhide



BL20 Black



Multi-Function mechanism with seat depth adjustment



See pages 172-175 for more information.

For specifications and dimensions see page 161.



Key Features



Back height adjustment via internal ratchet
Available immediately in the following textile:
Quilt



QL10 Black



Width and height adjustable arms



See pages 172-175 for more information.

For specifications and dimensions see page 161.



Key Features



Height and depth adjustable lumbar support
Available immediately in the following textile:
Luxhide



BL20 Black



Multiple position tilt lock



See pages 172-175 for more information.

For specifications and dimensions see page 158.



Key Features



Height and depth adjustable lumbar support
Available immediately in the following textile:
Mesh



Black Mesh fabric seat



Multi-Function mechanism with seat depth adjustment



See pages 172-175 for more information.

For specifications and dimensions see page 159.

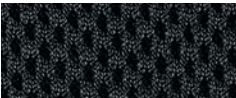


OTG2801 (pictured left)
Mesh Synchro-Tilter with upholstered seat List Price **\$626**



OTG2821
Mesh Synchro-Tilter with mesh seat List Price **\$785**

Available immediately
in the following textile:
Mesh



Black Mesh fabric seat
(OTG2801)



See pages 172-175 for more information.

For specifications and dimensions see page 158.



OTG2803
Mesh Multi-Function with upholstered seat List Price **\$652**



Key Features

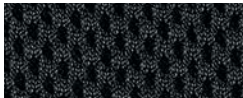


Multi-Function mechanism



Height adjustable lumbar support

Available immediately
in the following textile:
Mesh



Black Mesh fabric seat



See pages 172-175 for more information.

For specifications and dimensions see page 158.



OTG11325B
Mesh Back Synchro-Tilter
List Price **\$605**



Key Features



Multiple adjustment arm



Sliding seat mechanism

Available only in the following textile:

Quilt



QL10 Black



For specifications and dimensions see page 158.



OTG3191
Mesh Back Synchro-Tilter
List Price **\$573**



Key Features



Back height adjustment via internal ratchet



Height and width adjustable arms

Available immediately in the following textile:

Luxhide



BL20 Black



See pages 172-175 for more information.

For specifications and dimensions see page 158.



OTG11692
Mesh Back Tilter
List Price **\$477**



Key Feature



Seat depth adjustment

Available immediately in the following textile:

Luxhide



BL20 Black



See pages 172-175 for more information.

For specifications and dimensions see page 157.



OTG11980B
Mesh Back Synchro-Tilter
List Price **\$546**



Key Feature



Height adjustable arms with polyurethane armrests

Available immediately in the following textile:

Quilt



QL10 Black



See pages 172-175 for more information.

For specifications and dimensions see page 158.



OTG11685B
Mesh High Back Synchro-Tilter
List Price **\$520**



OTG11686B
Mesh Mid Back Synchro-Tilter
List Price **\$462**

Available immediately
in the following textile:



Black Mesh fabric seat



See pages 172-175 for more information.



For specifications and dimensions see pages 157-158.

OTG11685B (page 103) shown in Waterfall Prism (WA48) with Superior Laminate Desking shown in American Mahogany (AML) finish.



OTG11653
Multi-Function
List Price **\$599**



Key Features



Pivot arm rest



Manual back height adjustment

Available immediately
in the following textile:



QL10 Black



See pages 172-175 for more information.

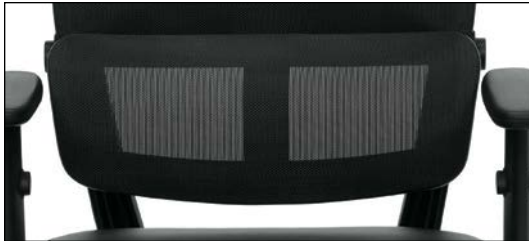
For specifications and dimensions see page 161.



OTG12110B
Mesh Back Luxhide Tilter
List Price **\$467**



Key Feature



Lumbar pad with flexible support

Available only in the
following textile:



BL20 Black



For specifications and dimensions see page 157.



OTG11652
High Back Tilter
List Price **\$377**



Key Features



Depth adjustable lumbar support



Height adjustable arms

Available immediately
in the following textile:



QL10 Black



See pages 172-175 for more information.

For specifications and dimensions see page 160.



OTG11651
Low Back Tilter
List Price **\$350**



Key Features



Depth adjustable lumbar support



Height adjustable arms

Available immediately
in the following textile:



QL10 Black



See pages 172-175 for more information.

For specifications and dimensions see page 160.



OTG11647B (page 107) with Superior Laminate Desking shown in Autumn Walnut (AWL) finish.



OTG11641B
Mesh High Back Synchro-Tilter
List Price **\$435**



OTG11647B
Mesh Mid Back Synchro-Tilter
List Price **\$393**



OTG11642B
Mesh Back Task
Armless
List Price **\$276**



OTG11642B
Mesh Back Task with
Adjustable Height Arm Kit
(OTG11620)
List Price **\$372**



OTG11642B
Mesh Back Task with Drafting
Stool Kit (OTG11600)
List Price **\$499**



OTG11642B
Mesh Back Task with Drafting
Stool Kit (OTG11600) and
Adjustable Height Arm Kit
(OTG11620)
List Price **\$595**

Available only in the
following textile:

Mesh



Black Mesh fabric seat



OTG11620
Adjustable Height Arm Kit
List Price **\$96**



OTG11600
Drafting Stool Kit
List Price **\$223**



For specifications and dimensions see pages 156-157, 171.



OTG11516B
Mesh High Back Synchro-Tilter
List Price **\$483**



OTG11514B
Mesh Mid Back Tilter
List Price **\$345**



OTG11769B Key Features



Styled back design



Width and height adjustable arms



Seat sliding mechanism



Back height adjustment via internal ratchet



Multi-Tilter mechanism



OTG11769B
Mesh Back Multi-Function
List Price **\$583**

Available only in the following textile:

Mesh



Black Mesh fabric seat



For specifications and dimensions see pages 156-158.



OTG11865B - LIMITED QTY AVAILABLE
Mesh Back Tilter
List Price **\$488**



Key Features



Stylish wing back design



Height adjustable arms with titanium accents

Available only in the following textile:

Quilt



QL10 Black



For specifications and dimensions see page 157.



OTG12112B
Mesh Back Tilter
List Price **\$387**



Key Features



Stylish back design



Height adjustable arms

Available only in the following textile:

Luxhide



BL20 Black



For specifications and dimensions see page 156.



OTG11950B
Multi-Function
List Price **\$467**



Key Features



Back height adjustment via internal ratchet
Available only in the following textile:
Quilt



QL10 Black



Seat depth adjustment



For specifications and dimensions see page 161.



OTG10904B
Mesh Back Synchro-Tilter
List Price **\$477**



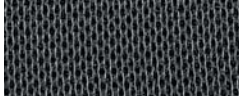
Key Features



Polished aluminum base

Available only in the following textile:

Mesh



Black Mesh fabric seat



For specifications and dimensions see page 157.



OTG11631B
Multi-Function
List Price **\$446**



Key Features



Height adjustable lumbar support

Available only in the following textile:

Quilt



QL10 Black



Seat and back angle adjustments



For specifications and dimensions see page 160.



OTG11328B - LIMITED QTY AVAILABLE
Mesh Back Tilter
List Price **\$440**



Key Features



Fixed arms



Sliding seat mechanism

Available only in the following textile:

Quilt



QL10 Black



For specifications and dimensions see page 157.



OTG11920B
Mesh High Back Tilter
List Price **\$414**



OTG11921B
Mesh Mid Back Tilter
List Price **\$361**



OTG11922B
Mesh Mid Back Task - Armless
List Price **\$303**



OTG11924 - LIMITED QTY AVAILABLE*
Adjustable Height Arm Kit
List Price **\$85**
for use on OTG11922B and OTG11923B



Black Mesh fabric seat



OTG11600
Drafting Stool Kit
List Price **\$223**



OTG11923B - LIMITED QTY AVAILABLE*
Mesh Back Guest - Armless
List Price **\$303**





OTG11715B - LIMITED QTY AVAILABLE*

Synchro-Tilter

List Price \$414



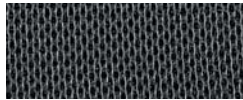
Key Feature



Decorative outer back shell

Available only in the following textile:

Mesh



Black Mesh fabric seat and back



For specifications and dimensions see page 160.



OTG11320B

Mesh Back Tilter

List Price \$371



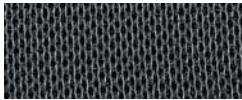
Key Feature



Decorative outer back shroud

Available only in the following textile:

Mesh



Black Mesh fabric seat



For specifications and dimensions see page 156.



OTG11850B

Tilter

List Price \$366



Available only in the following textile:

Quilt



QL10 Black



For specifications and dimensions see page 160.



OTG11612B

Tilter

List Price \$345



Available only in the following textile:

Quilt



QL10 Black



For specifications and dimensions see page 160.



OTG11642B
Mesh Back Task - Armless
List Price **\$276**



OTG11620
Adjustable Height Arm Kit
List Price **\$96**

OTG11600
Drafting Stool Kit with 10" Gas Cylinder
List Price **\$223** (kit only)
List Price **\$276** (chair only)
Total As Shown **\$499**

Available only in the following textile:
Mesh

Black Mesh fabric seat



For specifications and dimensions see page 156.



OTG11922B
Mesh Back Task - Armless
List Price **\$303**



OTG11924 - LIMITED QTY AVAILABLE!
Adjustable Height Arm Kit
List Price **\$85**

OTG11600
Drafting Stool Kit with 10" Gas Cylinder
List Price **\$223** (kit only)
List Price **\$303** (chair only)
Total As Shown **\$526**

Available only in the following textile:
Mesh

Black Mesh fabric seat



For specifications and dimensions see page 156.



OTG11343B
Air Mesh Task
List Price **\$223**



OTG11620
Adjustable Height Arm Kit
List Price **\$96**

OTG11600
Drafting Stool Kit with 10" Gas Cylinder
List Price **\$223** (kit only)
List Price **\$223** (chair only)
Total As Shown **\$446**

Available only in the following textile:
Mesh

Black Mesh fabric seat and back



For specifications and dimensions see page 160.



OTG11650
Task - Armless
List Price **\$271**



OTG11620
Adjustable Height Arm Kit
List Price **\$96**

OTG11600
Drafting Stool Kit with 10" Gas Cylinder
List Price **\$223** (kit only)
List Price **\$271** (chair only)
Total As Shown **\$494**

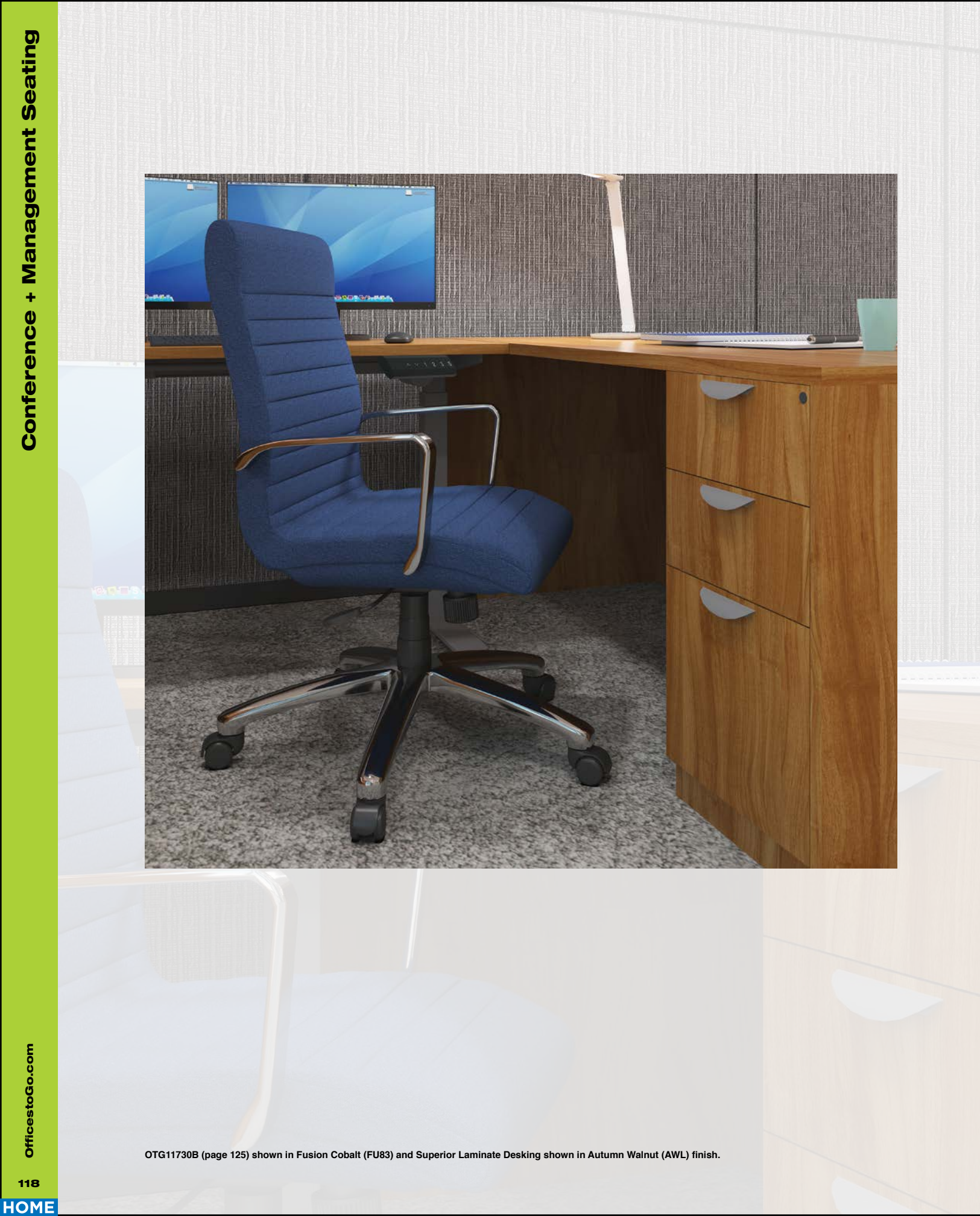
Available immediately in the following textile:
Quilt

QL10 Black



See pages 172-175 for more information.

For specifications and dimensions see page 160.



OfficestoGo Conference + Management Seating



OTG11730B (pictured left) - page 125



OTG11648B page 120



OTG2700 page 123



OTG11786B page 129



OTG13026B page 135



OTG11657B page 127



OTG10902B page 133

OTG11730B (page 125) shown in Fusion Cobalt (FU83) and Superior Laminate Desking shown in Autumn Walnut (AWL) finish.



OTG11648B

Segmented Cushion Tilter

List Price **\$610**



Key Features



Padded armrests can be removed to achieve a sleek look

Available only in the following textile:

Luxhide



BL20 Black



Segmented cushion back



For specifications and dimensions see page 164.



OTG11858B

Segmented Cushion Tilter

List Price **\$509**



Key Features



Padded armrests



Segmented cushion back

Available only in the following textile:

Luxhide



BL20 Black



For specifications and dimensions see page 163.



OTG11300B

Tilter with Wood Arms and Base

List Price **\$583**



Key Feature



Decorative wood arms and base

Available only in the following textile:

Luxhide



BL20 Black



For specifications and dimensions see page 164.



OTG11618B

Tilter

List Price **\$515**



Key Feature



Integrated headrest

Available only in the following textile:

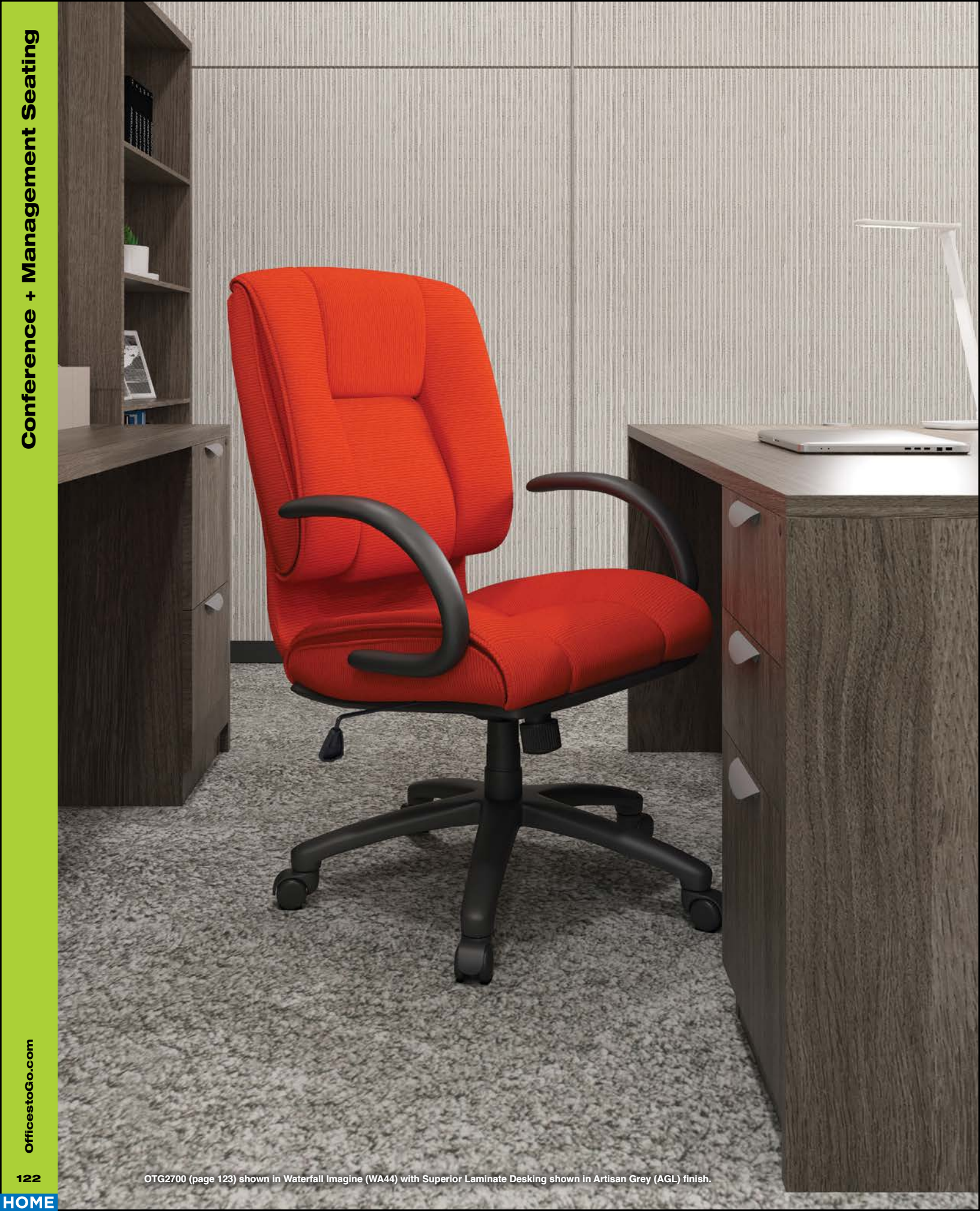
Luxhide



BL20 Black



For specifications and dimensions see page 163.



OTG2700 (page 123) shown in Waterfall Imagine (WA44) with Superior Laminate Desking shown in Artisan Grey (AGL) finish.



OTG2700
High Back Tilter
List Price **\$557**



OTG2700 Side View



OTG2701
Mid Back Tilter
List Price **\$536**



OTG2782
Guest Chair
List Price **\$424**

Available immediately
in the following textile:

Luxhide



BL20 Black



**2DAY
SHIP**

**MORE
TEXTILES**

See pages 172-175 for more information.



For specifications and dimensions see pages 164, 167.



OTG11730B
High Back Tilter
List Price **\$552**



OTG11732
High Back Tilter - Armless
List Price **\$552** **NOW STOCKED**



OTG11734B
Mid Back Tilter
List Price **\$515**



OTG11735
Mid Back Tilter - Armless
List Price **\$515** **NOW STOCKED**

Available immediately
in the following textiles:

Luxhide



BL20 Black



BL28 White (OTG11730B only)



See pages 172-175 for more information



For specifications and dimensions see pages 163-164.



OTG2788
Tilter
List Price **\$493**



Available immediately in the following textile:

Luxhide



BL20 Black

See pages 172-175 for more information.




For specifications and dimensions see page 163.




OTG11790B - LIMITED QTY AVAILABLE
Mesh Back Knee-Tilter
List Price **\$536**



Key Features




Knee-tilt mechanism




Multiple position tilt lock

Available only in the following textile:

Mesh



Black Mesh fabric seat



For specifications and dimensions see page 162.



OTG11657B
Mesh Back Tilter
List Price **\$446**

Available only in the following textile:

Mesh



Black Mesh fabric seat



For specifications and dimensions see page 162.

OTG11657B Mesh Back Tilter shown with SL9544RS Racetrack Boardroom Table in Artisan Grey Laminate AGL finish (page 198).



OTG11657B Side View

Key Features



Polished aluminum arm with removable arm pad



Chrome steel base





OTG11786B - LIMITED QTY AVAILABLE
Tilter List Price ***546**



Key Feature



Chrome steel base

**Available immediately
in the following textile:**

Luxhide



BL20 Black



See pages 172-175 for more information.


For specifications and dimensions see page 164.



OTG11975B
Tilter
List Price **\$403**




Key Feature




Padded armrests

Available only in the following textile:

Luxhide



BL20 Black




For specifications and dimensions see page 163.



OTG11617B
Tilter
List Price **\$393**




Key Features




Padded armrests

Available only in the following textile:

Luxhide



BL20 Black




For specifications and dimensions see page 163.



OTG11782B
Tilter
List Price **\$356**




Key Feature




Molded arm with upholstered inset cap

Available only in the following textile:

Luxhide



BL20 Black




For specifications and dimensions see page 163.



OTG11776B
Tilter
List Price **\$281**




Key Feature




Stylish Polyurethane armrests

Available only in the following textile:

Luxhide



BL20 Black



For specifications and dimensions see page 163.



OTG11750B
Mesh Back Tilter
List Price **\$356**



Stylish mesh back pattern

Available only in the following textile:

Mesh

Black Mesh fabric seat

For specifications and dimensions see page 162.



OTG10901B - LIMITED QTY AVAILABLE
Mesh Back Tilter
List Price **\$265**



Stylish chrome accent on outer back

Available only in the following textile:

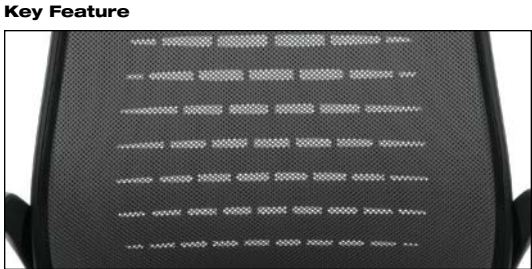
Mesh

Black Mesh fabric seat

For specifications and dimensions see page 162.



OTG10902B
Mesh Back Tilter
List Price **\$265**



Stylish mesh back pattern

Available only in the following textiles:

Mesh

Grey Mesh back

Black Mesh fabric seat

For specifications and dimensions see page 162.



OTG10900B
Mesh Back Tilter
List Price **\$239**



Stylish Polyurethane molded armrests

Available only in the following textiles:

Mesh

Grey Mesh back

Black Mesh fabric seat

For specifications and dimensions see page 162.



OTG13026B
Mesh Low Back Tilter
List Price **\$350**



OTG13026B Side View




OTG13050B (Shown with Casters - included)
Mesh Armchair
List Price **\$350**



OTG13050B (Shown with Glides - included)
Mesh Armchair
List Price **\$350**



OTG13050BT (Shown on OTG13050B)
Tablet only
List Price **\$106**

Available only in the following textile:
Luxhide

BL20 Black



For specifications and dimensions see pages 163, 166.

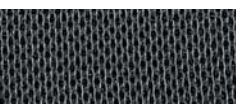


OTG11600
Drafting Stool Kit with 10" Gas Cylinder
List Price **\$223** (stool kit only)
List Price **\$276** (chair only - OTG11642B)
Total As Shown **\$499**

OTG11620
Adjustable Height Arm Kit
List Price **\$96**



Available only in the following textile:



Black Mesh fabric seat



For specifications and dimensions see page 171.

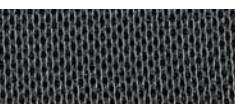


OTG11600
Drafting Stool Kit with 10" Gas Cylinder
List Price **\$223** (stool kit only)
List Price **\$303** (chair only - OTG11922B)
Total As Shown **\$526**

OTG11924 - LIMITED QTY AVAILABLE
Adjustable Height Arm Kit
List Price **\$85**



Available only in the following textile:



Black Mesh fabric seat



For specifications and dimensions see page 171.

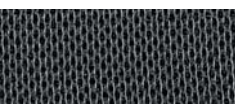


OTG11600
Drafting Stool Kit with 10" Gas Cylinder
List Price **\$223** (stool kit only)
List Price **\$223** (chair only - OTG11343B)
Total As Shown **\$446**

OTG11620
Adjustable Height Arm Kit
List Price **\$96**



Available only in the following textile:



Black Mesh fabric seat and back



For specifications and dimensions see page 171.



OTG11600
Drafting Stool Kit with 10" Gas Cylinder
List Price **\$223** (stool kit only)
List Price **\$271** (chair only - OTG11650B)
Total As Shown **\$494**

OTG11620
Adjustable Height Arm Kit
List Price **\$96**



Available immediately in the following textile:



QL10 Black seat and back

See pages 172-175 for more information.

For specifications and dimensions see page 171.



Model	Description	List Price
OTG5001NA	Armless Single Seat (\$615 each)	\$1230
OTG5002	Single Arm - Reversible (\$175 each)	\$350
OTG5003	Cushion Bridge	\$239
Total		\$1819



Model	Description	List Price
OTG5001NA	Armless Single Seat (\$615 each)	\$1230
OTG5002	Single Arm - Reversible	\$175
OTG5002C	Single Arm - Center	\$175
OTG5011	Pair of Connecting Brackets	\$48
OTG5004	Single Bench	\$398
Total		\$2026

INstock components - LIMITED AVAILABILITY WHILE INVENTORY REMAINS



OTG5001NA*
Armless Single Seat
\$615

**Not UPSable*



OTG5002
Single Arm - Reversible
\$175



OTG5002C
Single Arm - Center
\$175



OTG5003
Cushion Bridge
\$239



OTG5004
Single Bench
\$398



OTG5011
Pair of Connecting
Brackets
\$48/pair

Available immediately
in the following textile:

Luxhide



BL20 Black

Finish



Chrome Frame



These models are available immediately from stock in Luxhide Black (BL20), but are available in additional textiles. Additional textiles would be subject to "standard" lead times. See page 204-207 for available textiles.

For specifications and dimensions see page 170.

OTG5001NA (page 139) shown in Hudson Meadow (HD06) with Superior Laminate Desking shown in Artisan Grey (AGL) with Tungsten legs.

For specifications and dimensions see page 170.



OTG13007 (page 141) shown in Hudson Meadow (HD06), OTG13008 shown in Hudson Grey (HD08) and OTG13010 shown in Hudson Cerulean (HD14).



Model	Description	List Price
OTG13012	Square Modular Ottoman	\$382
OTG13010	V-Shaped Modular Ottoman (\$605 each)	\$1210
OTG13011	Rectangular Modular Ottoman (\$493 each)	\$986
OTG13009	Wedge Ottoman	\$467
OTG13008	Half Round Ottoman	\$451
OTG13007	Round Ottoman	\$350
Total		\$3846



Model	Description	List Price
OTG13012	Square Modular Ottoman (\$382 each)	\$764
OTG13010	V-Shaped Modular Ottoman (\$605 each)	\$1210
OTG13011	Rectangular Modular Ottoman (\$493 each)	\$986
Total		\$2960



Model	Description	List Price
OTG13012	Square Modular Ottoman (\$382 each)	\$764
OTG13010	V-Shaped Modular Ottoman (\$605 each)	\$2420
Total		\$3184

Instock components



OTG13012
Square Modular Ottoman
\$382



OTG13011
Rectangular Modular Ottoman
\$493



OTG13010
V-Shaped Modular Ottoman
\$605



OTG13007
Round Ottoman
\$350



OTG13008
Half Round Ottoman
\$451



OTG13009
Wedge Shaped Ottoman
\$467

Available immediately in the following textiles:

Hudson



HD08 Grey



HD11 Carbon

Optional Casters

C107SET4
Set of four casters for use on OTG13011, OTG13012, OTG13008 and OTG13009
\$54

C107RSET4
Set of four hard floor casters for use on OTG13011, OTG13012, OTG13008 and OTG13009
\$97

C107SET5
Set of five casters for use on OTG13010
\$65

C107RSET5
Set of five hard floor casters for use on OTG13010
\$118

C107SET6
Set of six casters for use on OTG13007
\$79

C107RSET6
Set of six hard floor casters for use on OTG13007
\$142



These models are available immediately from stock in Hudson Grey (HD08) and Hudson Carbon (HD11), but are available in additional textiles. Additional textiles would be subject to "standard" lead times. See page 172-175 for available textiles.

For specifications and dimensions see page 170.



OTG11341B (page 150) shown in Carrera Chili (CE92) and Flip Top Training Tables shown in Autumn Walnut (AWL) tops and Tungsten base finish.

OfficetoGo Stack, Nesting + Guest Seating





OTG2809
Mesh Back Guest Chair
List Price **\$483**



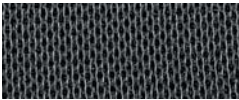
Key Feature



Molded armrests

Available immediately in the following textile:

Mesh



Black Mesh fabric seat



See pages 172-175 for more information.

For specifications and dimensions see page 167.



OTG11512B
Mesh Back Guest Chair
List Price **\$356**



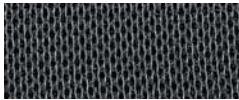
Key Feature



Stylish back detail

Available only in the following textile:

Mesh



Black Mesh fabric seat



For specifications and dimensions see page 166.



OTG2782
Guest Chair
List Price **\$424**



Available immediately in the following textile:

Luxhide



BL20 Black



See pages 172-175 for more information.

For specifications and dimensions see page 167.



OTG11820B(CX)
Wood Guest Chair - Cordovan Finish
List Price **\$456**



OTG11820B(TH)
Wood Guest Chair - Toffee Finish
List Price **\$456**

Available only in the following textile/finishes:

Luxhide



BL20 Black

Finishes



CX Cordovan



TH Toffee



For specifications and dimensions see page 167.



OTG13050B (Shown with Casters - included)
Mesh Armchair
List Price **\$350**



OTG13050B (Shown with Glides - included)
Mesh Armchair
List Price **\$350**



OTG13050BT (Shown on OTG13050B)
Tablet only
List Price **\$106**



Available only in the following textile:

Luxhide



BL20 Black



For specifications and dimensions see pages 156, 166, 171.



OTG3918B
Guest Chair
List Price **\$318**



Key Feature



Polyurethane arms

Available only in the following textile:

Quilt



QL10 Black



For specifications and dimensions see page 166.

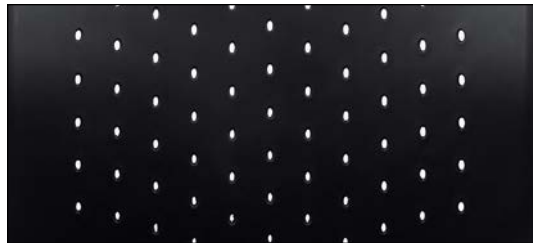


OTG11740B
Plastic Back Guest
List Price **\$318**



Can be stacked up to 5 high on the floor

Key Feature



Perforated back detail

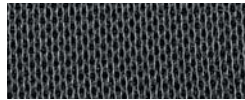
Available only in the following finish + textile:

Polypropylene



Black Polypropylene

Mesh



Black Mesh fabric seat

For specifications and dimensions see page 166.



OTG11923B - LIMITED QTY AVAILABLE
Mesh Back Guest Chair - Armless List Price **\$303**

OTG11923B Side View



OTG11920B
High Back Mesh Back Tilter
List Price **\$414**



OTG11921B
Mid Back Mesh Back Tilter
List Price **\$361**



OTG11922B
Mid Back Mesh Back Task - Armless
List Price **\$303**

OTG11924 - LIMITED QTY AVAILABLE
Adjustable Height Arm Kit
List Price **\$85**



Available only in the following textile:

Mesh



Black Mesh fabric seat

For specifications and dimensions see pages 156, 166, 171.



OTG3915B
Luxhide Guest Chair

List Price **\$324**



Available only in the following textile:

Luxhide



BL20 Black



For specifications and dimensions see page 166.



OTG11770BES - Espresso Finish
Luxhide Guest Chair with Wood Accents List Price **\$366**



OTG11770BCX - Cordovan Finish
Luxhide Guest Chair with Wood Accents List Price **\$366**

Available only in the following textile/finishes:

Luxhide



BL20 Black

Finishes



CX Cordovan



ES Espresso



For specifications and dimensions see page 167.



OTG11892

Guest Chair

List Price **\$361**



Available immediately in the following textile:

Quilt

QL10 Black

2DAY SHIP

MORE TEXTILES

See pages 172-175 for more information.

For specifications and dimensions see page 167.



OTG11341B

Armless Mesh Back Flip Seat Nesting Chair

List Price **\$377**



OTG11340B*

Mesh Back Flip Seat Nesting Chair (nested)

**Not UPSable*

List Price **\$424**

Available immediately in the following textile:

Mesh

Black Mesh fabric seat

For specifications and dimensions see page 169.



OTG11760B

Mesh Guest Chair

List Price **\$276**



Available immediately in the following textile:

Mesh

Black Mesh fabric seat

For specifications and dimensions see page 166.



OTG11761B

Armless Mesh Guest Chair with Casters

List Price **\$260**



Available only in the following textile:

Mesh

Black Mesh fabric seat

For specifications and dimensions see page 166.



OTG11703
Stack List Price **\$239**

Can be stacked up to 4 high on the floor or dolly.



OTG11697
Armless Stack List Price **\$181**

Can be stacked up to 13 high on the floor or 15 high on dolly.



OTG2748
Armless Stack List Price **\$191**

Can be stacked up to 4 high on the floor or dolly.



OTG11934
Armless Stack List Price **\$149**



OTG11704
Armless Stack List Price **\$212**

OTG11706 - LIMITED QTY AVAILABLE
Dolly List Price **\$265**
Dolly can accommodate 4 stacked chairs!



OTG11698 - LIMITED QTY AVAILABLE
Dolly List Price **\$318**
Dolly can accommodate 15 stacked chairs!



Can be stacked up to 4 high on the floor.

GC3010 - LIMITED QTY AVAILABLE
Dolly List Price **\$250**
Dolly can accommodate 4 stacked chairs!



OTG11705 - LIMITED QTY AVAILABLE
Dolly List Price **\$154**
Dolly can accommodate 10 stacked chairs!

Available immediately in the following textile:

Quilt

QL10 Black

See pages 172-175 for more information.

2DAY SHIP MORE TEXTILES

For specifications and dimensions see pages 168, 169.

Available immediately in the following textile:

Quilt

QL10 Black

See pages 172-175 for more information.

2DAY SHIP MORE TEXTILES

For specifications and dimensions see page 168.

Available immediately in the following textile:

Quilt

QL10 Black

See pages 172-175 for more information.

2DAY SHIP MORE TEXTILES

For specifications and dimensions see page 168.

Available immediately in the following textile:

Quilt

QL10 Black

See pages 172-175 for more information.

2DAY SHIP MORE TEXTILES

For specifications and dimensions see page 168.



OTG11310B
Medium Density stacking
Not UPSable
List Price **\$170**

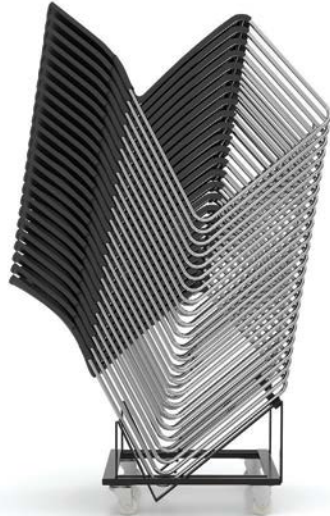
Can be stacked up to 8 high on the floor or 24 high on dolly.



OTG11310B Side View



Shown stacked 8 high on floor



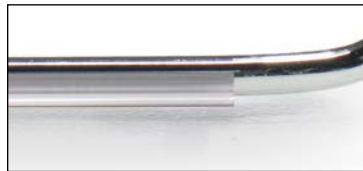
Shown stacked 24 high on optional dolly (OTG11311B)



OTG11311B - LIMITED QTY AVAILABLE
Dolly
List Price **\$308**
Dolly can accommodate 24 stacked chairs!



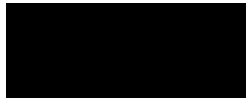
OTG11312 - LIMITED QTY AVAILABLE
Connectors - Use 2 for each connection
List Price **\$27**



OTG11313
Glides (priced per pair)
List Price **\$22**



Available only in the following finish:
Polypropylene



Black

For specifications and dimensions see page 168.



OTG1220B
Stack
List Price **\$202**

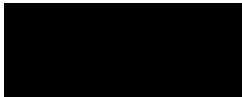
Can be stacked up to 5 high on the floor.



OTG1221B
Armless Stack
List Price **\$186**

Can be stacked up to 5 high on the floor.

Available only in the following finish:
Polypropylene



Black

For specifications and dimensions see page 168.



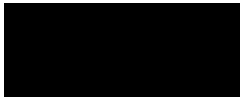
OTG11700
Plastic Back Stack
List Price **\$191**

Can be stacked up to 12 high on the floor or dolly.



OTG11701 - LIMITED QTY AVAILABLE
Dolly
List Price **\$207**
Dolly can accommodate 12 stacked chairs!

Available only in the following finish:
Polypropylene



Black

For specifications and dimensions see page 168.





OTG11642B - pages 107, 116
Mesh Back Task - Armless
Dimensions: 19w x 20d x 37h
Ergonomic Features: C, M, N, S

- Black mesh back with breathable Black mesh fabric seat
- Pneumatic seat height adjustment
- Armless design - height adjustable arms (OTG11620) are available
- Swivel task mechanism
- Twin wheel carpet casters
- Drafting stool kit (OTG11600) available (pages 107, 116, 117, 136, 137)
- Soft casters (OTG10700) are available (page 171)

List Price **\$276**



OTG11922B - pages 113, 116, 148
Mesh Back Task - Armless
Dimensions: 20w x 23d x 38h
Ergonomic Features: C, M, N

- Mid back design
- Black mesh back with breathable Black air mesh fabric seat
- Pneumatic seat height adjustment
- Armless design - height adjustable arms (OTG11924) are available
- Swivel task mechanism with single position tilt lock and tilt tension adjustment
- Twin wheel carpet casters
- Drafting stool kit (OTG11600) available (pages 107, 116, 117, 136, 137)
- Soft casters (OTG10701) are available (page 171)

List Price **\$303**



OTG11514B - page 108
Mid Back Mesh Back Tilter
Dimensions: 25w x 23d x 37h
Ergonomic Features: A, B, C, H, M, N, S

- Black mesh back with breathable Black mesh fabric seat
- Pneumatic seat height adjustment
- Height adjustable arms with polyurethane armrests
- Single position tilt lock with tilt tension adjustment
- Twin wheel carpet casters
- Soft casters (OTG10700) are available (page 171)

List Price **\$345**



OTG11921B - pages 113, 148
Mid Back Mesh Back Tilter
Dimensions: 25w x 23d x 39h
Ergonomic Features: A, B, C, H, M, N, S

- Mid back design
- Black mesh back with breathable Black air mesh fabric seat
- Pneumatic seat height adjustment
- Height adjustable arms with polyurethane armrests
- Tilter mechanism with single position tilt lock and tilt tension adjustment
- Twin wheel carpet casters
- Soft casters (OTG10701) are available (page 171)

List Price **\$361**



OTG11320B - page 114
Low Back Mesh Back Tilter
Dimensions: 23w x 24d x 39.5h
Ergonomic Features: A, B, C, H, M, N, S

- Black mesh back with breathable Black mesh fabric seat
- Pneumatic seat height adjustment
- Height adjustable arms
- Single position tilt lock with tilt tension adjustment
- Twin wheel carpet casters
- Soft casters (OTG10700) are available (page 171)

List Price **\$371**



OTG12112B - page 109
Mesh Back Tilter
Dimensions: 25w x 24d x 41h
Ergonomic Features: A, B, C, H, M, N, S

- Black mesh back with black Luxhide seat
- Pneumatic seat height adjustment
- Height adjustable arms with polyurethane armrests
- Single position tilt lock with tilt tension adjustment
- Twin wheel carpet casters
- Soft casters (OTG10701) are available (page 171)

List Price **\$387**



OTG11647B - page 107
Mid Back Mesh Back Synchro-Tilter
Dimensions: 24.5w x 22d x 37h
Ergonomic Features: A, B, C, H, L, M, N, S

- Black mesh back with breathable Black mesh fabric seat
- Pneumatic seat height adjustment
- Height adjustable arms with polyurethane armrests
- Synchro-tilt chair control with tilt tension adjustment
- Single position tilt lock
- Twin wheel carpet casters
- Soft casters (OTG10700) are available (page 171)

List Price **\$393**



OTG11920B - pages 113, 148
High Back Mesh Back Tilter
Dimensions: 24w x 22.5d x 42h
Ergonomic Features: A, B, C, H, M, N, S

- High back design
- Black mesh back with breathable Black air mesh fabric seat
- Pneumatic seat height adjustment
- Height adjustable arms with polyurethane armrests
- Tilter mechanism with single position tilt lock and tilt tension adjustment
- Twin wheel carpet casters
- Soft casters (OTG10701) are available (page 171)

List Price **\$414**



OTG11641B - page 107
High Back Mesh Back Synchro-Tilter
Dimensions: 25w x 23d x 43h
Ergonomic Features: A, B, C, H, L, M, N, S

- Black mesh back with breathable Black mesh fabric seat
- Pneumatic seat height adjustment
- Height adjustable arms with polyurethane armrests
- Synchro-tilt chair control with tilt tension adjustment
- Single position tilt lock
- Twin wheel carpet casters
- Soft casters (OTG10700) are available (page 171)

List Price **\$435**



OTG11328B - LIMITED QTY AVAILABLE - page 111
Mesh Back Task
Dimensions: 26.5w x 24d x 43h
Ergonomic Features: A, B, C, E, L, M, N

- Black mesh back with patterned Black fabric seat
- Pneumatic seat height adjustment
- Fixed height arms with polyurethane armrests
- Synchro-tilt chair control with tilt tension adjustment
- Seat slider mechanism
- Twin wheel carpet casters
- Soft casters (OTG10700) are available (page 171)

List Price **\$440**



OTG11686B - page 103
Mid Back Mesh Back Synchro-Tilter
Dimensions: 25.5w x 24.5d x 36h
Ergonomic Features: A, B, C, H, L, M, N

- Black mesh back with breathable Black mesh fabric seat
- Pneumatic seat height adjustment
- Height adjustable arms with polyurethane armrests
- Synchro-tilt chair control with infinite position tilt lock
- Twin wheel carpet casters
- Soft casters (OTG10701) are available (page 171)

List Price **\$462**



OTG12110B - page 104
Mesh Back Luxhide Tilter
Dimensions: 25w x 25d x 41h
Ergonomic Features: A, B, C, H, M, N, S

- Black mesh back with Black Luxhide seat
- Pneumatic seat height adjustment
- Height adjustable arms with polyurethane armrests
- Single position tilt lock with tilt tension adjustment
- Unique lumbar pad with flexible support
- Twin wheel carpet casters
- Soft casters (OTG10701) are available (page 171)

List Price **\$467**



OTG10904B - page 110
Mesh Back Synchro-Tilter
Dimensions: 24w x 24d x 37.5h
Ergonomic Features: A, B, C, H, L, M, N

- Black mesh back with breathable Black air mesh seat
- Pneumatic seat height adjustment
- Adjustable lumbar support
- Height adjustable arms with self-skinned urethane arm caps
- Synchro-tilt chair control with multiple-position tilt lock and tilt tension adjustment
- Twin wheel carpet casters
- Soft casters (OTG10701) are available (page 171)

List Price **\$477**



OTG11692 - page 101
Mesh Tilter
Dimensions: 24.5w x 25d x 38h
Ergonomic Features: A, B, C, E, H, M, N, S

- Black mesh back with mock leather surround and perforated Luxhide seat
- Pneumatic seat height adjustment
- Height adjustable arms
- Single position tilt lock with tilt tension adjustment
- Seat depth adjustment
- Twin wheel carpet casters
- Soft casters (OTG10700) are available (page 171)

List Price **\$477**



OTG11516B - page 108
High Back Mesh Back Synchro-Tilter
Dimensions: 26.75w x 24d x 41.5h
Ergonomic Features: A, B, C, H, L, M, N

- Black mesh back with breathable Black mesh fabric seat
- Pneumatic seat height adjustment
- Height adjustable arms with polyurethane armrests
- Synchro-tilt chair control with single position tilt lock
- Twin wheel carpet casters
- Soft casters (OTG10700) are available (page 171)

List Price **\$483**



OTG11865B - LIMITED QTY AVAILABLE - page 109
Mesh Back Tilter
Dimensions: 27w x 25d x 38h
Ergonomic Features: A, B, C, H, M, N, S

- Black mesh back with patterned Black fabric seat
- Pneumatic seat height adjustment
- Height adjustable arms with titanium accents
- Single position tilt lock with tilt tension adjustment
- Twin wheel carpet casters
- Soft casters (OTG10701) are available (page 171)

List Price **\$488**



A Tilt Tension
Increase or decrease to match body weight. Allows you to rock comfortably, without heavy pushing, reducing muscle fatigue.



B Chair Tilt Lock
Lock the tilt movement in position(s) to accommodate your working posture. Allows you to lock your chair in a comfortable and supportive position. (can be either single position or infinite style).



C Seat Height
Raise or lower to allow your feet to rest flat on the floor. Avoids pressure under your thighs, easing blood flow.



D Back Height
Raise or lower to position lumbar support in your lumbar area. Reduces likelihood of back pain.



E Seat Depth
Change the depth of the seat to accommodate the length of your thighs. Keeps your back in contact with the backrest while avoiding pressure behind your knees.



G Back Angle
Adjust to change the angle of your torso in relation to your thighs. Helps reduce disc pressure and relaxes your back muscles.



H Arm Height
Raise or lower to support your forearms. Reduces muscular effort in neck and shoulders, minimizing risk of pain.



L Synchro-Tilt Movement
Backrest reclines at a faster rate than the seat, increasing the angle between your torso and thighs. Enhances comfort and encourages dynamic body movement.



M Waterfall Seat Edge
Reduces pressure at the back of the knee, contributing to good blood flow.



N Properly Contoured Cushions
Support the body effectively, allowing you to sit longer without discomfort.



Q Width Adjustable Arms
Allows outward movement of armrests to match shoulder breadth. Ensures armrests properly support forearms, reducing muscular effort in neck and shoulders.



R Arm Rotation
Rotate armcap to support your forearm in various positions. Reduces muscular effort in neck and shoulders, minimizing risk of pain.



S Center-Tilt Movement
Chair tilts from a pivot point under the center of the seat allowing you to rock. When your feet are well supported, blood flow is enhanced.



V Lumbar Depth Adjustment
Increase or decrease curvature of the back to match the profile of your lower back. Enhances comfort and support in the lower lumbar area.



OTG11685B - page 103
High Back Mesh Back Synchro-Tilter
Dimensions: 25.5w x 24.5d x 41h
Ergonomic Features: A, B, C, H, L, M, N

- Black mesh back with breathable Black mesh fabric seat
- Pneumatic seat height adjustment
- Height adjustable arms with polyurethane armrests
- Synchro-tilt chair control with infinite position tilt lock
- Twin wheel carpet casters
- Soft casters (OTG10701) are available (page 171)

List Price **\$520**



OTG11980B - page 101
Mesh Back Synchro-Tilter
Dimensions: 26w x 24d x 44h
Ergonomic Features: A, B, C, H, L, M, N

- Black mesh back with patterned Black fabric seat
- Pneumatic seat height adjustment
- Height adjustable arms with polyurethane armrests
- Synchro-tilt chair control with tilt tension adjustment
- Single position tilt lock
- Twin wheel carpet casters
- Soft casters (OTG10701) are available (page 171)

List Price **\$546**



OTG3191 - page 100
Mesh Back Synchro-Tilter
Dimensions: 24.5w x 23d x 43h
Ergonomic Features: A, B, C, H, L, M, N

- High back design
- Black mesh back with Black Luxhide seat
- Pneumatic seat height adjustment
- Height and width adjustable arms with polyurethane armrests
- Synchro-tilt mechanism with single position tilt lock and tilt tension adjustment
- Single position tilt lock
- Ratchet back height adjustment
- Twin wheel carpet casters
- Soft casters (OTG10701) are available (page 171)

List Price **\$573**



OTG11769B - page 108
Mesh Back Multi-Function
Dimensions: 26.75w x 23.5d x 43h
Ergonomic Features: A, B, C, D, E, G, H, M, N, Q, S

- Black mesh back with breathable Black mesh fabric seat
- Pneumatic seat height adjustment
- Height and width adjustable armrests
- Infinite seat tilt lock with tilt tension adjustment
- Back angle adjustment via internal ratchet
- Seat slider
- Twin wheel carpet casters
- Soft casters (OTG10700) are available (page 171)

List Price **\$583**



OTG11325B - page 100
Mesh Back Synchro-Tilter
Dimensions: 26w x 25d x 40h
Ergonomic Features: A, B, C, H, L, M, N, R

- Black mesh back with patterned Black fabric seat
- Pneumatic seat height adjustment
- Height adjustable, rotatable, forward and rearward and side-to-side sliding armrests with polyurethane pads
- Black, vertically adjustable lumbar support
- Synchro-tilt chair control with tilt tension adjustment
- Single position tilt lock
- Polished Aluminum base
- Twin wheel carpet casters
- Soft casters (OTG10701) are available (page 171)

List Price **\$605**



OTG2801 - page 99
Mesh Synchro-Tilter
Dimensions: 26w x 26.5d x 39.5h
Ergonomic Features: A, B, C, H, L, M, N

- Black mesh back with breathable Black mesh fabric seat
- Pneumatic seat height adjustment
- Height adjustable arms
- Multi-position seat tilt lock with anti-kick back feature
- Adjustable lumbar support
- Synchro-tilt chair control with tilt tension adjustment
- Twin wheel carpet casters
- Soft casters (OTG10701) are available (page 171)

List Price **\$626**



OTG2803 - page 99
Mesh Multi-Function
Dimensions: 26w x 26.5d x 39.5h
Ergonomic Features: A, B, C, G, H, M, N, S

- Black mesh back with breathable Black mesh fabric seat
- Pneumatic seat height adjustment
- Height adjustable arms
- Adjustable lumbar support
- Infinite seat tilt lock with tilt tension adjustment
- Back angle adjustment
- Forward tilt control
- Twin wheel carpet casters
- Soft casters (OTG10701) are available (page 171)

List Price **\$652**



OTG3101 - LIMITED QTY AVAILABLE - page 97
Mesh Back Synchro-Tilter
Dimensions: 26w x 27d x 38.5h
Ergonomic Features: A, B, C, E, H, L, M, N

- Black mesh back with Black Luxhide upholstered seat
- Pneumatic seat height adjustment
- Height adjustable arms
- Synchro-tilt mechanism
- Infinite seat tilt lock with tilt tension adjustment
- Height and depth adjustable lumbar support
- Twin wheel carpet casters
- Soft casters (OTG10701) are available (page 171)

List Price **\$700**



OTG3103 - LIMITED QTY AVAILABLE - page 97
Mesh Back Multi-Function
Dimensions: 26w x 27d x 39.5h
Ergonomic Features: A, B, C, E, G, H, M, N, S

- Black mesh back with breathable Black mesh fabric seat
- Pneumatic seat height adjustment
- Height adjustable arms
- Multi-function mechanism with seat depth adjustment
- Back angle adjustment
- Forward tilt mechanism
- Infinite seat tilt lock with tilt tension adjustment
- Height and depth adjustable lumbar support
- Seat slider mechanism
- Twin wheel carpet casters
- Soft casters (OTG10701) are available (page 171)

List Price **\$737**



OTG2821 - page 99
Mesh Seat and Back Synchro-Tilter
Dimensions: 26w x 26.5d x 39.5h
Ergonomic Features: A, B, C, H, L, M, N

- Black mesh back with Black mesh seat
- Pneumatic seat height adjustment
- Height adjustable arms
- Multiple-position tilt lock with anti-kick back feature
- Seat depth adjustment
- Adjustable lumbar support
- Synchro-tilt chair control with tilt tension adjustment
- Twin wheel carpet casters
- Soft casters (OTG10701) are available (page 171)

List Price **\$785**



OTG11685B
Shown in Terrace Cherry Blossom (TC64).
See pages 202-207 for additional color options.



A Tilt Tension
Increase or decrease to match body weight. Allows you to rock comfortably, without heavy pushing, reducing muscle fatigue.



B Chair Tilt Lock
Lock the tilt movement in position(s) to accommodate your working posture. Allows you to lock your chair in a comfortable and supportive position. (can be either single position or infinite style).



C Seat Height
Raise or lower to allow your feet to rest flat on the floor. Avoids pressure under your thighs, easing blood flow.



D Back Height
Raise or lower to position lumbar support in your lumbar area. Reduces likelihood of back pain.



E Seat Depth
Change the depth of the seat to accommodate the length of your thighs. Keeps your back in contact with the backrest while avoiding pressure behind your knees.



G Back Angle
Adjust to change the angle of your torso in relation to your thighs. Helps reduce disc pressure and relaxes your back muscles.



H Arm Height
Raise or lower to support your forearms. Reduces muscular effort in neck and shoulders, minimizing risk of pain.



L Synchro-Tilt Movement
Backrest reclines at a faster rate than the seat, increasing the angle between your torso and thighs. Enhances comfort and encourages dynamic body movement.



M Waterfall Seat Edge
Reduces pressure at the back of the knee, contributing to good blood flow.



N Properly Contoured Cushions
Support the body effectively, allowing you to sit longer without discomfort.



Q Width Adjustable Arms
Allows outward movement of armrests to match shoulder breadth. Ensures armrests properly support forearms, reducing muscular effort in neck and shoulders.



R Arm Rotation
Rotate armcap to support your forearm in various positions. Reduces muscular effort in neck and shoulders, minimizing risk of pain.



S Center-Tilt Movement
Chair tilts from a pivot point under the center of the seat allowing you to rock. When your feet are well supported, blood flow is enhanced.



V Lumbar Depth Adjustment
Increase or decrease curvature of the back to match the profile of your lower back. Enhances comfort and support in the lower lumbar area.



OTG11343B - page 117

- Arm Mesh Task - Armless
- Dimensions: 19w x 23d x 37h
- Ergonomic Features: C, M, N
- Black air mesh fabric on back and seat with decorative accents
 - Pneumatic seat height adjustment
 - Armless design - height adjustable arms (OTG11620) are available
 - Twin wheel carpet casters
 - Drafting stool kit (OTG11600) available (pages 107, 116, 117, 136, 137)
 - Soft casters (OTG10700) are available (page 171)

List Price ***223**



OTG11650 - page 117

- Task - Armless
- Dimensions: 21w x 25d x 38h
- Ergonomic Features: C, E, M, N, S
- Patterned Black fabric upholstery
 - Pneumatic seat height adjustment
 - Seat depth adjustment
 - Armless design - height adjustable arms (OTG11620) are available
 - Twin wheel carpet casters
 - Drafting stool kit (OTG11600) available (pages 107, 116, 117, 136, 137)
 - Soft casters (OTG10700) are available (page 171)

List Price ***271**



OTG11612B - page 115

- Tilter
- Dimensions: 26w x 26d x 36h
- Ergonomic Features: A, B, C, H, M, N, S
- Patterned Black fabric upholstery
 - Pneumatic seat height adjustment
 - Height adjustable armrests
 - Single position tilt lock with tilt tension adjustment
 - Fixed back angle
 - Twin wheel carpet casters
 - Soft casters (OTG10700) are available (page 171)

List Price ***345**



OTG11651 - page 105

- Low Back Tilter
- Dimensions: 24w x 25.5d x 40h
- Ergonomic Features: A, B, C, H, N, S
- Patterned Black fabric upholstery
 - Pneumatic seat height adjustment
 - Height adjustable armrests
 - Single position tilt lock with tilt tension adjustment
 - Twin wheel carpet casters
 - Soft casters (OTG10700) are available (page 171)

List Price ***350**



OTG11950B - page 110

- Multi-Function
- Dimensions: 26.5w x 23.5d x 39h
- Ergonomic Features: A, B, C, D, E, G, H, M, N, S
- Patterned Black fabric upholstery
 - Pneumatic seat height adjustment
 - Height adjustable armrests
 - Infinite seat tilt lock with tilt tension adjustment
 - Back angle adjustment
 - Back height adjustment via internal ratchet
 - Seat slider
 - Twin wheel carpet casters
 - Soft casters (OTG10700) are available (page 171)

List Price ***467**



OTG11653 - page 104

- Multi-Function
- Dimensions: 26.5w x 25d x 39h
- Ergonomic Features: A, B, C, D, G, H, M, N, R, S
- Patterned Black fabric upholstery
 - Pneumatic seat height adjustment
 - Height adjustable arms with pivot feature
 - Infinite seat tilt lock with tilt tension adjustment
 - Back angle adjustment
 - Height adjustable lumbar support
 - Twin wheel carpet casters
 - Soft casters (OTG10700) are available (page 171)

List Price ***599**



OTG11850B - page 115

- Tilter
- Dimensions: 25.5w x 23.5d x 38h
- Ergonomic Features: A, B, C, H, M, N, S
- Patterned Black fabric upholstery
 - Pneumatic seat height adjustment
 - Height adjustable arms with polyurethane armrests
 - Single position tilt lock with tilt tension adjustment
 - Fixed back angle
 - Twin wheel carpet casters
 - Soft casters (OTG10700) are available (page 171)

List Price ***366**



OTG11652 - page 105

- High Back Tilter
- Dimensions: 26.5w x 25.5d x 42.5h
- Ergonomic Features: A, B, C, H, M, N, S
- Patterned Black fabric upholstery
 - Pneumatic seat height adjustment
 - Height adjustable armrests
 - Single position tilt lock with tilt tension adjustment
 - Twin wheel carpet casters
 - Soft casters (OTG10700) are available (page 171)

List Price ***377**



- OTG11715B - LIMITED QTY AVAILABLE** - page 114
- Synchro-Tilter
- Dimensions: 25.5w x 21.5d x 40.5h
- Ergonomic Features: A, B, C, H, L, M, N
- Patterned Black fabric upholstery
 - Pneumatic seat height adjustment
 - Height adjustable arms
 - Synchro-tilt chair control with tilt tension adjustment
 - Single position tilt lock
 - Twin wheel carpet casters
 - Soft casters (OTG10701) are available (page 171)

List Price ***414**



OTG11631B - page 111

- Multi-Function
- Dimensions: 25.5w x 25d x 44h
- Ergonomic Features: A, B, C, D, G, H, M, N, S
- Patterned Black fabric upholstery
 - Pneumatic seat height adjustment
 - Height adjustable armrests
 - Height adjustable lumbar support
 - Twin wheel carpet casters
 - Soft casters (OTG10700) are available (page 171)

List Price ***446**



OTG11710 - page 96

- Multi-Function
- Dimensions: 26w x 24.5d x 42h
- Ergonomic Features: A, B, C, D, G, H, M, N, S
- Patterned Black fabric upholstery
 - Pneumatic seat height adjustment
 - Height and width adjustable armrests
 - Infinite seat tilt lock with tilt tension adjustment
 - Back angle adjustment
 - Back height adjustment via internal ratchet
 - Forward tilt control
 - Twin wheel carpet casters
 - Soft casters (OTG10700) are available (page 171)

List Price ***700**



OTG2913 - page 96

- Multi-Function
- Dimensions: 25w x 24d x 41h
- Ergonomic Features: A, B, C, D, E, G, H, M, N, Q, S
- Black Luxhide upholstery with mock leather trim
 - Pneumatic seat height adjustment
 - Height and width adjustable armrests
 - Infinite seat tilt lock with tilt tension adjustment
 - Back angle adjustment
 - Back height adjustment via internal ratchet
 - Forward tilt control
 - Seat depth adjustment via seat slider
 - Twin wheel carpet casters
 - Soft casters (OTG10701) are available (page 171)

List Price ***785**



OTG2913
Shown in Luxhide White (BL28).
See pages 202-207 for additional color options.



A Tilt Tension
Increase or decrease to match body weight. Allows you to rock comfortably, without heavy pushing, reducing muscle fatigue.



B Chair Tilt Lock
Lock the tilt movement in position(s) to accommodate your working posture. Allows you to lock your chair in a comfortable and supportive position. (can be either single position or infinite style).



C Seat Height
Raise or lower to allow your feet to rest flat on the floor. Avoids pressure under your thighs, easing blood flow.



D Back Height
Raise or lower to position lumbar support in your lumbar area. Reduces likelihood of back pain.



E Seat Depth
Change the depth of the seat to accommodate the length of your thighs. Keeps your back in contact with the backrest while avoiding pressure behind your knees.



G Back Angle
Adjust to change the angle of your torso in relation to your thighs. Helps reduce disc pressure and relaxes your back muscles.



H Arm Height
Raise or lower to support your forearms. Reduces muscular effort in neck and shoulders, minimizing risk of pain.



L Synchro-Tilt Movement
Backrest reclines at a faster rate than the seat, increasing the angle between your torso and thighs. Enhances comfort and encourages dynamic body movement.



M Waterfall Seat Edge
Reduces pressure at the back of the knee, contributing to good blood flow.



N Properly Contoured Cushions
Support the body effectively, allowing you to sit longer without discomfort.



Q Width Adjustable Arms
Allows outward movement of armrests to match shoulder breadth. Ensures armrests properly support forearms, reducing muscular effort in neck and shoulders.



R Arm Rotation
Rotate armcap to support your forearm in various positions. Reduces muscular effort in neck and shoulders, minimizing risk of pain.



S Center-Tilt Movement
Chair tilts from a pivot point under the center of the seat allowing you to rock. When your feet are well supported, blood flow is enhanced.



V Lumbar Depth Adjustment
Increase or decrease curvature of the back to match the profile of your lower back. Enhances comfort and support in the lower lumbar area.



OTG10900B - page 133
Mesh Back Tilter
Dimensions: 22.5w x 22.5d x 37h
Ergonomic Features: A, B, C, M, N, S

- Grey mesh back with breathable Black mesh fabric seat
- Pneumatic seat height adjustment
- Molded arms
- Single position tilt lock with tilt tension adjustment
- Twin wheel carpet casters
- Soft casters (OTG10701) are available (page 171)

List Price ***239**



OTG10901B - LIMITED QTY AVAILABLE - page 132
Mesh Back Tilter
Dimensions: 23.5w x 22d x 34h
Ergonomic Features: A, B, C, M, N, S

- Black mesh back with breathable Black mesh fabric seat
- Pneumatic seat height adjustment
- Molded arms
- Single position tilt lock with tilt tension adjustment
- Chrome accent on outer back
- Twin wheel carpet casters
- Soft casters (OTG10701) are available (page 171)

List Price ***265**



OTG10902B - page 133
Mesh Back Tilter
Dimensions: 23w x 24d x 39h
Ergonomic Features: A, B, C, M, N, S

- Grey mesh back with breathable Black mesh fabric seat
- Pneumatic seat height adjustment
- Molded arms
- Single position tilt lock with tilt tension adjustment
- Twin wheel carpet casters
- Soft casters (OTG10701) are available (page 171)

List Price ***265**



OTG13026B - page 135
Mesh Low Back Tilter
Dimensions: 23w x 23.5d x 40h
Ergonomic Features: A, B, C, M, N, S

- Black mesh back with Black Luxhide seat
- Pneumatic seat height adjustment
- Fixed "twisted ribbon" molded arms
- Single position tilt lock with tilt tension adjustment
- Twin wheel carpet casters
- Soft casters (OTG10701) are available (page 171)

List Price ***350**



OTG11776B - page 131
Luxhide Tilter
Dimensions: 24.5w x 25d x 41.5h
Ergonomic Features: A, B, C, M, N, S

- Black Luxhide upholstery with mock leather trim
- Pneumatic seat height adjustment
- Fixed height molded arms
- Single position tilt lock with tilt tension adjustment
- Twin wheel carpet casters
- Soft casters (OTG10700) are available (page 171)

List Price ***281**



OTG11782B - page 131
Luxhide Tilter
Dimensions: 25w x 26d x 46h
Ergonomic Features: A, B, C, M, N, S

- Black Luxhide upholstery with mock leather trim
- Pneumatic seat height adjustment
- Fixed height molded arms with upholstered inset cap
- Single position tilt lock with tilt tension adjustment
- Twin wheel carpet casters
- Soft casters (OTG10700) are available (page 171)

List Price ***356**



OTG11617B - page 130
Luxhide Tilter
Dimensions: 26w x 27d x 42.5h
Ergonomic Features: A, B, C, N, S

- Black Luxhide upholstery with mock leather trim
- Pneumatic seat height adjustment
- Fixed height molded arms with padded armrests
- Single position tilt lock with tilt tension adjustment
- Twin wheel carpet casters
- Soft casters (OTG10700) are available (page 171)

List Price ***393**



OTG11975B - page 130
Luxhide Tilter
Dimensions: 28w x 23d x 41.5h
Ergonomic Features: A, B, C, M, N, S

- Black Luxhide upholstery with mock leather trim
- Pneumatic seat height adjustment
- Fixed height molded arms with upholstered armrests
- Single position tilt lock with tilt tension adjustment
- Twin wheel carpet casters
- Soft casters (OTG10700) are available (page 171)

List Price ***403**



OTG11750B - page 132
Mesh Back Tilter
Dimensions: 27w x 24d x 40.5h
Ergonomic Features: A, B, C, M, N, S

- Black mesh back with breathable Black mesh fabric seat
- Pneumatic seat height adjustment
- Fixed height upholstered armrests
- Single position tilt lock with tilt tension adjustment
- Twin wheel carpet casters
- Soft casters (OTG10700) are available (page 171)

List Price ***356**



OTG11657B - page 127
Mesh Back Tilter
Dimensions: 24w x 23.5d x 41h
Ergonomic Features: A, B, C, M, N, S

- Black mesh back with breathable Black mesh fabric seat
- Pneumatic seat height adjustment
- Aluminum arms with padded armrests (arms can be removed to achieve a fully polished look)
- Single position tilt lock with tilt tension adjustment
- Twin wheel carpet casters
- Soft casters (OTG10700) are available (page 171)

List Price ***446**



OTG11790B - LIMITED QTY AVAILABLE - page 126
Mesh Back Knee-Tilter
Dimensions: 23w x 25d x 38.5h
Ergonomic Features: A, B, C, M, N, S

- Black mesh back with breathable Black mesh fabric seat
- Pneumatic seat height adjustment
- Polished Aluminum arms with polyurethane armrests
- Knee-tilt mechanism with multiple position tilt lock
- Twin wheel carpet casters
- Soft casters (OTG10700) are available (page 171)

List Price ***536**



OTG2788 - page 126
Luxhide Tilter
Dimensions: 25.5w x 27.5d x 42h
Ergonomic Features: A, B, C, M, N, S

- Black Luxhide upholstery with mock leather trim
- Pneumatic seat height adjustment
- Black molded arms
- Single position tilt lock with tilt tension adjustment
- Twin wheel carpet casters
- Soft casters (OTG10700) are available (page 171)

List Price ***493**



OTG11858B - page 120
Luxhide Segmented Cushion Tilter
Dimensions: 25.5w x 26d x 44.5h
Ergonomic Features: A, B, C, M, N, S

- Black Luxhide upholstery with mock leather trim
- Pneumatic seat height adjustment
- Chrome arms with upholstered armrests
- Single position tilt lock
- Swivel/tilt mechanism with tilt tension adjustment
- Twin wheel carpet casters
- Soft casters (OTG10700) are available (page 171)

List Price ***509**



OTG11735 - page 125
Mid Back Luxhide Tilter - Armless
Dimensions: 23.5w x 24.5d x 38h
Ergonomic Features: A, B, C, M, N, S

- Black Luxhide upholstery with mock leather trim
- Pneumatic seat height adjustment
- Single position tilt lock with tilt tension adjustment
- Twin wheel carpet casters
- Soft casters (OTG10700) are available (page 171)

List Price ***515**



OTG11618B - page 121
Luxhide Tilter
Dimensions: 25.5w x 30d x 44.5h
Ergonomic Features: A, B, C, M, N, S

- Black Luxhide upholstery with mock leather trim
- Pneumatic seat height adjustment
- Fixed height molded arms with padded armrests
- Single position tilt lock with tilt tension adjustment
- Integrated headrest
- Twin wheel carpet casters
- Soft casters (OTG10700) are available (page 171)

List Price ***515**



A Tilt Tension
Increase or decrease to match body weight. Allows you to rock comfortably, without heavy pushing, reducing muscle fatigue.



B Chair Tilt Lock
Lock the tilt movement in position(s) to accommodate your working posture. Allows you to lock your chair in a comfortable and supportive position. (can be either single position or infinite style).



C Seat Height
Raise or lower to allow your feet to rest flat on the floor. Avoids pressure under your thighs, easing blood flow.



D Back Height
Raise or lower to position lumbar support in your lumbar area. Reduces likelihood of back pain.



E Seat Depth
Change the depth of the seat to accommodate the length of your thighs. Keeps your back in contact with the backrest while avoiding pressure behind your knees.



G Back Angle
Adjust to change the angle of your torso in relation to your thighs. Helps reduce disc pressure and relaxes your back muscles.



H Arm Height
Raise or lower to support your forearms. Reduces muscular effort in neck and shoulders, minimizing risk of pain.



L Synchro-Tilt Movement
Backrest reclines at a faster rate than the seat, increasing the angle between your torso and thighs. Enhances comfort and encourages dynamic body movement.



M Waterfall Seat Edge
Reduces pressure at the back of the knee, contributing to good blood flow.



N Properly Contoured Cushions
Support the body effectively, allowing you to sit longer without discomfort.



Q Width Adjustable Arms
Allows outward movement of armrests to match shoulder breadth. Ensures armrests properly support forearms, reducing muscular effort in neck and shoulders.



R Arm Rotation
Rotate armcap to support your forearm in various positions. Reduces muscular effort in neck and shoulders, minimizing risk of pain.



S Center-Tilt Movement
Chair tilts from a pivot point under the center of the seat allowing you to rock. When your feet are well supported, blood flow is enhanced.



V Lumbar Depth Adjustment
Increase or decrease curvature of the back to match the profile of your lower back. Enhances comfort and support in the lower lumbar area.



OTG11734B - page 125
Mid Back Luxhide Tilter
Dimensions: 23.5w x 24.5d x 38h
Ergonomic Features: A, B, C, M, N, S

- Black Luxhide upholstery with mock leather trim
- Pneumatic seat height adjustment
- Polished Aluminum arms (arms can be removed to achieve a sleek look)
- Single position tilt lock with tilt tension adjustment
- Twin wheel carpet casters
- Soft casters (OTG10700) are available (page 171)

List Price ***515**



OTG2701 - page 123
Mid Back Luxhide Tilter
Dimensions: 27w x 28d x 39h
Ergonomic Features: A, B, C, M, N, S

- Black Luxhide upholstery with mock leather trim
- Pneumatic seat height adjustment
- Polyurethane "reverse curve" arms
- Single position tilt lock with tilt tension adjustment
- Twin wheel carpet casters
- Soft casters (OTG10700) are available (page 171)

List Price ***536**



OTG11786B - LIMITED QTY AVAILABLE - page 129
Specialty Luxhide Tilter
Dimensions: 24.5w x 25d x 41.5h
Ergonomic Features: A, B, C, M, N, S

- Black Luxhide upholstery with mock leather trim
- Pneumatic seat height adjustment
- Chrome plated steel base
- Tilt tension adjustment
- Twin wheel carpet casters
- Soft casters (OTG10700) are available (page 171)

List Price ***546**



OTG11732 - page 125
High Back Luxhide Tilter - Armless
Dimensions: 23.5w x 24.5d x 40h
Ergonomic Features: A, B, C, M, N, S

- Black or White Luxhide upholstery with mock leather trim
- Pneumatic seat height adjustment
- Single position tilt lock with tilt tension adjustment
- Twin wheel carpet casters
- Soft casters (OTG10700) are available (page 171)

List Price ***552**



OTG11730B - page 125
High Back Luxhide Tilter
Dimensions: 23.5w x 24.5d x 40h
Ergonomic Features: A, B, C, M, N, S

- Black or White Luxhide upholstery with mock leather trim
- Pneumatic seat height adjustment
- Polished Aluminum arms (arms can be removed to achieve a sleek look)
- Single position tilt lock with tilt tension adjustment
- Twin wheel carpet casters
- Soft casters (OTG10700) are available (page 171)

List Price ***552**



OTG2700 - page 123
High Back Luxhide Tilter
Dimensions: 27w x 28d x 42h
Ergonomic Features: A, B, C, M, N, S

- Black Luxhide upholstery with mock leather trim
- Pneumatic seat height adjustment
- Polyurethane "reverse curve" arms
- Single position tilt lock with tilt tension adjustment
- Twin wheel carpet casters
- Soft casters (OTG10700) are available (page 171)

List Price ***557**



OTG11300B - page 121
Luxhide Tilter with Wood Arms and Base
Dimensions: 28.5w x 28d x 45h
Ergonomic Features: A, B, C, N, S

- Black Luxhide upholstery with mock leather trim
- Pneumatic seat height adjustment
- Padded armrests
- Single position tilt lock with tilt tension adjustment
- Integral headrest
- Wood arms and wood capped base in Cordovan (CX) finish
- Twin wheel carpet casters
- Soft casters (OTG10701) are available (page 171)

List Price ***583**



OTG11648B - page 120
Luxhide Segmented Tilter
Dimensions: 24.5w x 24.5d x 41h
Ergonomic Features: A, B, C, M, N, S

- Black Luxhide upholstery with mock leather trim
- Pneumatic seat height adjustment
- Chrome arms with upholstered armrests (arms can be removed to achieve a sleek look)
- Single position tilt lock
- Swivel/tilt mechanism with tilt tension adjustment
- Twin wheel carpet casters
- Soft casters (OTG10700) are available (page 171)

List Price ***610**



OTG11786B
Shown in Luxhide Saddle (BL23).
See pages 202-207 for additional color options.



A Tilt Tension
Increase or decrease to match body weight. Allows you to rock comfortably, without heavy pushing, reducing muscle fatigue.



B Chair Tilt Lock
Lock the tilt movement in position(s) to accommodate your working posture. Allows you to lock your chair in a comfortable and supportive position. (can be either single position or infinite style).



C Seat Height
Raise or lower to allow your feet to rest flat on the floor. Avoids pressure under your thighs, easing blood flow.



D Back Height
Raise or lower to position lumbar support in your lumbar area. Reduces likelihood of back pain.



E Seat Depth
Change the depth of the seat to accommodate the length of your thighs. Keeps your back in contact with the backrest while avoiding pressure behind your knees.



G Back Angle
Adjust to change the angle of your torso in relation to your thighs. Helps reduce disc pressure and relaxes your back muscles.



H Arm Height
Raise or lower to support your forearms. Reduces muscular effort in neck and shoulders, minimizing risk of pain.



L Synchro-Tilt Movement
Backrest reclines at a faster rate than the seat, increasing the angle between your torso and thighs. Enhances comfort and encourages dynamic body movement.



M Waterfall Seat Edge
Reduces pressure at the back of the knee, contributing to good blood flow.



N Properly Contoured Cushions
Support the body effectively, allowing you to sit longer without discomfort.



Q Width Adjustable Arms
Allows outward movement of armrests to match shoulder breadth. Ensures armrests properly support forearms, reducing muscular effort in neck and shoulders.



R Arm Rotation
Rotate armcap to support your forearm in various positions. Reduces muscular effort in neck and shoulders, minimizing risk of pain.



S Center-Tilt Movement
Chair tilts from a pivot point under the center of the seat allowing you to rock. When your feet are well supported, blood flow is enhanced.



V Lumbar Depth Adjustment
Increase or decrease curvature of the back to match the profile of your lower back. Enhances comfort and support in the lower lumbar area.



OTG11761B - page 151
Armless Mesh Back Guest Chair with Casters
Dimensions: 20.5w x 22.5d x 35h
Ergonomic Features: M, N

- Black mesh back with breathable Black mesh fabric seat
- Four leg design with casters
- Does not stack
- Soft casters (OTG10701) are available (page 171)

List Price ***260**



OTG11760B - page 151
Mesh Back Guest Chair
Dimensions: 23.5w x 23.25d x 34h
Ergonomic Features: M, N

- Black mesh back with breathable Black mesh fabric seat
- Four leg design with molded armrests
- Does not stack

List Price ***276**



OTG11923B - LIMITED QTY AVAILABLE - pages 113, 148
Armless Mesh Back Guest Chair
Dimensions: 20.75w x 22d x 38h
Ergonomic Features: M, N

- Black mesh back with breathable Black air mesh fabric seat
- Powder coated cantilever base
- Chair frame glides
- Does not stack

List Price ***303**



OTG11740B - page 147
Plastic Back Guest Chair
Dimensions: 24.5w x 22.5d x 34h
Ergonomic Features: M, N

- Perforated plastic back with Black mesh fabric seat
- Oval tube chrome frame with molded armrests
- Can be stacked up to 5 high
- Packed 2 chairs per carton (priced each)

List Price ***318**



NEW

OTG3918B - page 147
Guest
Dimensions: 24.5w x 24d x 34h
Ergonomic Features: M, N

- Black fabric upholstered seat and back
- Comfortable polyurethane arms
- Black powder coated steel frame
- 4 leg design

List Price ***318**



OTG3915B - page 149
Luxhide Guest
Dimensions: 24.5w x 27d x 33.5h
Ergonomic Features: M, N

- Black Luxhide upholstery with mock leather trim
- Black epoxy powder coated steel frame with upholstered armrests

List Price ***324**



NEW

OTG13050B - pages 135, 146
Low Back Mesh Armchair with Luxhide Seat
Dimensions: 23w x 23.5d x 36.5h
Ergonomic Features: M, N

- Black mesh back with Black Luxhide seat
- Fixed “twisted ribbon” molded arms
- Black painted steel frame
- Can be fitted with either glides or carpet casters (both are included)

List Price ***350**



OTG11512B - page 144
Mesh Back Guest Chair
Dimensions: 22w x 24d x 33.5h
Ergonomic Features: M, N

- Black mesh back with Black air mesh seat
- Polyurethane arm caps
- Black powder coated steel frame

List Price ***356**

OTG13050BT - pages 135, 146
Tablet
List Price ***106**



OTG11892 - page 150
Guest
Dimensions: 23w x 26.5d x 34h
Ergonomic Features: M, N

- Patterned Black fabric upholstery
- Mid-back design
- Sled base design with Black powder coated steel frame
- Upholstered armrests

List Price ***361**



OTG11770BCX - page 149
Luxhide Guest Chair with Wood Accents
Dimensions: 24w x 26d x 34.5h
Ergonomic Features: M, N

- Black Luxhide with mock leather trim
- Cordovan (CX) finished wood arms and legs

List Price ***366**



OTG11770BES - page 149
Luxhide Guest Chair with Wood Accents
Dimensions: 24w x 26d x 34.5h
Ergonomic Features: M, N

- Black Luxhide with mock leather trim
- Espresso (ES) finished wood arms and legs

List Price ***366**



OTG2782 - pages 123, 145
Luxhide Guest
Dimensions: 24.5w x 25.5d x 36.5h
Ergonomic Features: M, N

- Black Luxhide upholstery with mock leather trim
- Attractive sled base design
- Upholstered armrests

List Price ***424**



OTG11820B(CX) - page 145
Wood Guest
Dimensions: 23w x 23d x 32.5h
Ergonomic Features: M, N

- Black Luxhide seat upholstery
- Sophisticated wood frame design
- Cordovan (CX) finish

List Price ***456**



OTG11820B(TH) - page 145
Wood Guest
Dimensions: 23w x 23d x 32.5h
Ergonomic Features: M, N

- Black Luxhide seat upholstery
- Sophisticated wood frame design
- Toffee (TH) finish

List Price ***456**



OTG2809 - page 144
Mesh Back Guest
Dimensions: 22.25w x 24d x 34.5h
Ergonomic Features: M, N

- Black mesh back with Black mesh fabric seat
- Molded armrests
- Four leg design

List Price ***483**



A Tilt Tension
Increase or decrease to match body weight. Allows you to rock comfortably, without heavy pushing, reducing muscle fatigue.



B Chair Tilt Lock
Lock the tilt movement in position(s) to accommodate your working posture. Allows you to lock your chair in a comfortable and supportive position. (can be either single position or infinite style).



C Seat Height
Raise or lower to allow your feet to rest flat on the floor. Avoids pressure under your thighs, easing blood flow.



D Back Height
Raise or lower to position lumbar support in your lumbar area. Reduces likelihood of back pain.



E Seat Depth
Change the depth of the seat to accommodate the length of your thighs. Keeps your back in contact with the backrest while avoiding pressure behind your knees.



G Back Angle
Adjust to change the angle of your torso in relation to your thighs. Helps reduce disc pressure and relaxes your back muscles.



H Arm Height
Raise or lower to support your forearms. Reduces muscular effort in neck and shoulders, minimizing risk of pain.



L Synchro-Tilt Movement
Backrest reclines at a faster rate than the seat, increasing the angle between your torso and thighs. Enhances comfort and encourages dynamic body movement.



M Waterfall Seat Edge
Reduces pressure at the back of the knee, contributing to good blood flow.



N Properly Contoured Cushions
Support the body effectively, allowing you to sit longer without discomfort.



Q Width Adjustable Arms
Allows outward movement of armrests to match shoulder breadth. Ensures armrests properly support forearms, reducing muscular effort in neck and shoulders.



R Arm Rotation
Rotate armcap to support your forearm in various positions. Reduces muscular effort in neck and shoulders, minimizing risk of pain.



S Center-Tilt Movement
Chair tilts from a pivot point under the center of the seat allowing you to rock. When your feet are well supported, blood flow is enhanced.



V Lumbar Depth Adjustment
Increase or decrease curvature of the back to match the profile of your lower back. Enhances comfort and support in the lower lumbar area.



OTG11934 - page 153

Armless Stack

Dimensions: 17.5w x 22.5d x 33.5h

Ergonomic Features: M, N

- Patterned Black fabric upholstery
- Black powder coated steel frame
- Floor and stack bumpers
- Can be stacked 10 high on optional dolly (OTG11705)
- Packed 2 per carton (priced each)

List Price **\$149**

OTG11705 - LIMITED QTY

AVAILABLE Dolly - page 153

List Price **\$154**



OTG11310B - page 154

Medium Density Stacking

Dimensions: 18.25w x 20.5d x 32h

- Impact resistant Black plastic seat and back (one piece)
- Chrome plated steel rod frame
- Can be stacked 8 high on the floor or 24 high on dolly (OTG11311B)
- Packed 4 per carton (priced each)

List Price **\$170**

OTG11311B - LIMITED QTY

AVAILABLE Dolly - page 154

List Price **\$308**

OTG11312 - LIMITED QTY

AVAILABLE Connectors - page 154

List Price **\$27**

OTG11313 Glides - page 154

List Price **\$22** (per pair)



OTG11697 - page 152

Armless Stack

Dimensions: 18.5w x 23.5d x 30h

Ergonomic Features: M, N

- Patterned Black fabric upholstery
- Tubular chrome frame
- Can be stacked 13 high on the floor or 15 high on optional dolly (OTG11698)
- Packed 2 per carton (priced each)

List Price **\$181**

OTG11698 - LIMITED QTY

AVAILABLE Dolly - page 152

List Price **\$318**



OTG1221B - page 155

Armless Stack

Dimensions: 18w x 21d x 31.5h

- Impact resistant Black plastic seat and back
- Chrome steel frame
- Can be stacked 5 high on the floor
- Packed 4 per carton (priced each)

List Price **\$186**



OTG11703 - page 152

Stack

Dimensions: 21.5w x 23d x 30.5h

Ergonomic Features: M, N

- Patterned Black fabric upholstery
- Black powder coated frame
- Can be stacked 4 high on optional dolly (OTG11706)
- Packed 2 per carton (priced each)

List Price **\$239**

OTG11706 - LIMITED QTY

AVAILABLE Dolly - page 152

List Price **\$265**



OTG11700 - page 155

Armless Plastic Back Stack

Dimensions: 22w x 22.5d x 31h

- Impact resistant Black plastic seat and back
- Chrome steel frame
- Can be stacked 12 high with or without optional dolly (OTG11701)
- Packed 2 per carton (priced each)

List Price **\$191**

OTG11701 - LIMITED QTY

AVAILABLE Dolly - page 155

List Price **\$207**



OTG2748 - page 153

Armless Stack

Dimensions: 19.5w x 22.5d x 32h

Ergonomic Features: M, N

- Patterned Black fabric upholstery
- Black powder coated frame
- Can be stacked 4 high with or without optional dolly (GC3010)
- Packed 2 per carton (priced each)

List Price **\$191**

GC3010 - LIMITED QTY

AVAILABLE Dolly - page 153

List Price **\$240**



OTG1220B - page 155

Stack

Dimensions: 21.5w x 21d x 31.5h

- Impact resistant Black plastic seat and back
- Chrome steel frame
- Can be stacked 5 high on the floor
- Packed 4 per carton (priced each)

List Price **\$202**



OTG11704 - page 152

Armless Stack

Dimensions: 21.5w x 23d x 30.5h

Ergonomic Features: M, N

- Patterned Black fabric upholstery
- Black powder coated frame
- Can be stacked 4 high on optional dolly (OTG11706)
- Packed 2 per carton (priced each)

List Price **\$212**

OTG11706 - LIMITED QTY

AVAILABLE Dolly - page 152

List Price **\$265**



OTG11341B - page 150

Armless Mesh Back Flip Seat Nesting

Dimensions: 22w x 22d x 33h

Ergonomic Features: M, N

- Black mesh back with breathable Black air mesh fabric seat
- Flip seat design allows chair to be nested horizontally
- Black painted steel frame
- Swivelling carpet casters
- Does not stack
- Packed 2 per carton (priced each)
- Soft casters (OTG10701) are available (page 171)

List Price **\$377**



OTG11340B - page 150

Mesh Back Flip Seat Nesting

Dimensions: 25.5w x 22d x 33h

Ergonomic Features: M, N

- Black mesh back with breathable Black air mesh fabric seat
- Black polypropylene arms
- Flip seat design allows chair to be nested horizontally
- Black painted steel frame
- Swiveling carpet casters
- Does not stack
- Packed 2 per carton (priced each)
- Soft casters (OTG10701) are available (page 171)

List Price **\$424**



A Tilt Tension

Increase or decrease to match body weight. Allows you to rock comfortably, without heavy pushing, reducing muscle fatigue.



B Chair Tilt Lock

Lock the tilt movement in position(s) to accommodate your working posture. Allows you to lock your chair in a comfortable and supportive position. (can be either single position or infinite style).



C Seat Height

Raise or lower to allow your feet to rest flat on the floor. Avoids pressure under your thighs, easing blood flow.



D Back Height

Raise or lower to position lumbar support in your lumbar area. Reduces likelihood of back pain.



E Seat Depth

Change the depth of the seat to accommodate the length of your thighs. Keeps your back in contact with the backrest while avoiding pressure behind your knees.



G Back Angle

Adjust to change the angle of your torso in relation to your thighs. Helps reduce disc pressure and relaxes your back muscles.



H Arm Height

Raise or lower to support your forearms. Reduces muscular effort in neck and shoulders, minimizing risk of pain.



L Synchro-Tilt Movement

Backrest reclines at a faster rate than the seat, increasing the angle between your torso and thighs. Enhances comfort and encourages dynamic body movement.



M Waterfall Seat Edge

Reduces pressure at the back of the knee, contributing to good blood flow.



N Properly Contoured Cushions

Support the body effectively, allowing you to sit longer without discomfort.



Q Width Adjustable Arms

Allows outward movement of armrests to match shoulder breadth. Ensures armrests properly support forearms, reducing muscular effort in neck and shoulders.



R Arm Rotation

Rotate armcap to support your forearm in various positions. Reduces muscular effort in neck and shoulders, minimizing risk of pain.



S Center-Tilt Movement

Chair tilts from a pivot point under the center of the seat allowing you to rock. When your feet are well supported, blood flow is enhanced.



V Lumbar Depth Adjustment

Increase or decrease curvature of the back to match the profile of your lower back. Enhances comfort and support in the lower lumbar area.



OTG5002 - LIMITED QTY AVAILABLE - page 139
Single Arm - Reversible
Dimensions: 3w x 18.5d x 9h
List Price ***175**



OTG5002C - LIMITED QTY AVAILABLE - page 139
Single Arm - Center
Used to define seating areas
Dimensions: 3w x 18.5d x 9h
List Price ***175**



OTG5003 - LIMITED QTY AVAILABLE - page 139
Cushion Bridge
Can be used for seating applications and will support a person's weight
Dimensions: 25w x 22d x 4h
List Price ***239**



OTG5004 - LIMITED QTY AVAILABLE - page 139
Single Bench
Dimensions: 25w x 23d x 17.5h
List Price ***398**



OTG5001NA - LIMITED QTY AVAILABLE - page 139
Armless Single Seat
Dimensions: 25w x 29d x 30.5h
List Price ***615**



OTG5011 - LIMITED QTY AVAILABLE - page 139
Pair of Connecting Brackets
List Price ***48/pair**



OTG13012 - page 141
Square Shaped Modular Ottoman
Snap-in bell-shaped glides
Dimensions: 20w x 20d x 17.5h
List Price ***382**



OTG13011 - page 141
Rectangular Shaped Modular Ottoman
Snap-in bell-shaped glides
Dimensions: 40.5w x 20d x 17.5h
List Price ***493**



OTG13010 - page 141
V-Shaped Modular Ottoman
Snap-in bell-shaped glides
Dimensions: 43w x 27.5d x 17.5h
List Price ***605**



NEW

OTG13007 - page 141
Round Shaped Modular Ottoman
Snap-in bell-shaped glides
Dimensions: 20w x 20d x 17.5h
List Price ***350**



NEW

OTG13008 - page 141
Half Round Shaped Modular Ottoman
Snap-in bell-shaped glides
Dimensions: 40w x 21d x 17.5h
List Price ***451**



NEW

OTG13009 - page 141
Wedge Shaped Modular Ottoman
Snap-in bell-shaped glides
Dimensions: 40w x 17.75d x 17.5h
List Price ***467**



A Tilt Tension
Increase or decrease to match body weight. Allows you to rock comfortably, without heavy pushing, reducing muscle fatigue.



B Chair Tilt Lock
Lock the tilt movement in position(s) to accommodate your working posture. Allows you to lock your chair in a comfortable and supportive position. (can be either single position or infinite style).



C Seat Height
Raise or lower to allow your feet to rest flat on the floor. Avoids pressure under your thighs, easing blood flow.



D Back Height
Raise or lower to position lumbar support in your lumbar area. Reduces likelihood of back pain.



E Seat Depth
Change the depth of the seat to accommodate the length of your thighs. Keeps your back in contact with the backrest while avoiding pressure behind your knees.



G Back Angle
Adjust to change the angle of your torso in relation to your thighs. Helps reduce disc pressure and relaxes your back muscles.



H Arm Height
Raise or lower to support your forearms. Reduces muscular effort in neck and shoulders, minimizing risk of pain.



OTG11924 - LIMITED QTY AVAILABLE - pages 113, 116, 136, 148
Adjustable Height Arm Kit
Dimensions: 25w x 23d x 43h
List Price ***85**



OTG11620 - pages, 107, 116, 117, 136, 137
Adjustable Height Arm Kit
Dimensions: 25w x 23d x 43h
List Price ***96**



OTG10700
Set of Five Soft Casters
List Price ***53**



OTG10701
Set of Five Soft Casters
List Price ***54**



OTG11600 - pages 107, 116, 117, 136, 137
Drafting Stool Kit with 10" Gas Cylinder
• 26" flat injection molded base
• Twin wheel carpet casters
• 10" gas cylinder
• Height adjustable aluminum foot ring with locking knob
• Casters included
• Available on OTG11922B, OTG11642B, OTG11650 and OTG11343B only
List Price ***223**



L Synchro-Tilt Movement
Backrest reclines at a faster rate than the seat, increasing the angle between your torso and thighs. Enhances comfort and encourages dynamic body movement.



M Waterfall Seat Edge
Reduces pressure at the back of the knee, contributing to good blood flow.



N Properly Contoured Cushions
Support the body effectively, allowing you to sit longer without discomfort.



Q Width Adjustable Arms
Allows outward movement of armrests to match shoulder breadth. Ensures armrests properly support forearms, reducing muscular effort in neck and shoulders.



R Arm Rotation
Rotate armcap to support your forearm in various positions. Reduces muscular effort in neck and shoulders, minimizing risk of pain.



S Center-Tilt Movement
Chair tilts from a pivot point under the center of the seat allowing you to rock. When your feet are well supported, blood flow is enhanced.



V Lumbar Depth Adjustment
Increase or decrease curvature of the back to match the profile of your lower back. Enhances comfort and support in the lower lumbar area.

OfficetoGo

2DAY SHIP



2DAY
SHIP

MORE
TEXTILES




Best Selling Seating


Custom Shipped in 2 Days!

In addition to these products being INstock and available now, you can customize and have them shipped in as little as 2 business days (\$55 upcharge applies for non-stocked textiles)!


WORK + TASK




OTG11650
List Price \$271
Stocked in
Quilt QL10 Black
(maximum 50)




OTG11651
List Price \$350
Stocked in
Quilt QL10 Black
(maximum 50)




OTG11652
List Price \$377
Stocked in
Quilt QL10 Black
(maximum 50)




OTG11686
List Price \$462
Stocked in
Black Air Mesh Fabric
(maximum 50)




OTG11692
List Price \$477
Stocked in
Luxhide BL20 Black
(maximum 50)




OTG11980
List Price \$546
Stocked in
Quilt QL10 Black
(maximum 50)




OTG11685
List Price \$520
Stocked in
Black Air Mesh Fabric
(maximum 50)




OTG3191
List Price \$573
Stocked in
Luxhide BL20 Black
(maximum 50)




OTG11653
List Price \$599
Stocked in
Quilt QL10 Black
(maximum 50)




OTG2801
List Price \$626
Stocked in
Black Air Mesh Fabric
(maximum 50)




OTG2803
List Price \$652
Stocked in
Black Air Mesh Fabric
(maximum 50)




OTG3101
List Price \$700
Stocked in
Luxhide BL20 Black
(maximum 50)



OTG11710
List Price \$700
Stocked in
Quilt QL10 Black
(maximum 50)




OTG3103
List Price \$737
Stocked in
Luxhide BL20 Black
(maximum 50)




OTG2913
List Price \$785
Stocked in
Luxhide BL20 Black
(maximum 50)


CONFERENCE + MANAGEMENT




OTG2788
List Price \$493
Stocked in
Luxhide BL20 Black
(maximum 50)




OTG11734*
List Price \$515
Stocked in
Luxhide BL20 Black
(maximum 50)
(See note below)




OTG11735*
List Price \$515
Stocked in
Luxhide BL20 Black
(maximum 50)
(See note below)




OTG2701
List Price \$536
Stocked in
Luxhide BL20 Black
(maximum 50)




OTG11786B
List Price \$546
Stocked in
Luxhide BL20 Black
(maximum 50)



OTG11730**
List Price \$552
Stocked in
Luxhide BL20 Black
and BL28 White
(maximum 50)
(See note below)



OTG11732**
List Price \$552
Stocked in
Luxhide BL20 Black
(maximum 50)
(See note below)




OTG2700
List Price \$557
Stocked in
Luxhide BL20 Black
(maximum 50)


*These models (OTG11734 + OTG11735) are only available in the following Luxhide colors in the OTG 2 Day Ship Program: Dark Brown (BL24) and White (BL28). All other textiles and Luxhide colors (except stocked BL20, Black) would be subject to "standard" lead times.

**These models (OTG11730 + OTG11732) are only available in the following Luxhide color in the OTG 2 Day Ship Program: Dark Brown (BL24). All other textiles and Luxhide colors (except stocked BL20, Black (OTG11730 + OTG11732) and BL28, White (OTG11730 only)) would be subject to "standard" lead times.


GUEST + STACK




OTG11934
List Price \$149
Stocked in
Quilt QL10 Black
(maximum 100)




OTG11697
List Price \$181
Stocked in
Quilt QL10 Black
(maximum 100)




OTG2748
List Price \$191
Stocked in
Quilt QL10 Black
(maximum 100)




OTG11704
List Price \$212
Stocked in
Quilt QL10 Black
(maximum 100)




OTG11703
List Price \$239
Stocked in
Quilt QL10 Black
(maximum 100)



OTG2782
List Price \$424
Stocked in
Luxhide BL20 Black
(maximum 50)



OTG11892
List Price \$361
Stocked in
Quilt QL10 Black
(maximum 50)



OTG2809
List Price \$483
Stocked in
Black Air Mesh Fabric
(maximum 50)



Example of 2 Day Ship Seating Pricing:

Model	OTG11980
List Price.....	\$546
Stocked Textile.....	QL10
Custom Textile (BL26)	\$55
Total Cost.....	\$601



OTG11980
(QL10)
List Price \$546

+ \$55 =



OTG11980
(BL26)
Total Price \$601

Offices to Go 2 Day Ship Seating Terms and Conditions

- All models have **MAXIMUM** order quantities which can be fulfilled within the **OTG 2 Day Ship** program. These are noted below each model. For greater quantities, please contact **CustomerCare** for lead times and terms.
- Orders must clearly state "OTG 2 Day Ship" at the time of submittal.
- Program is limited to certain Fabrics and Luxhides shown on pages 204-205
- Orders cannot be changed or canceled after order acknowledgment.
- Current Offices to Go list price applies at time of order.
- All eligible models are UPSable; Offices to Go reserves the right to ship "best way."
- Order must be clean with correct model numbers, options, textiles, correct pricing, etc. to apply.
- Dealers must be in good standing and within terms for order to be processed without delay.
- Program available in the 48 contiguous Unites States.
- Order shipment address can be to the dealer or end-user directly.